

Key Vocabulary

biodiversity - a word we use to describe all of the animals, plants and bacteria that live in a area.

canopy layer - A layer in the rainforest where 50% of rainforest life can be found.

climate - The weather and temperature of an area over a long period of time.

carbon dioxide - A gas that is breathed out by animals and humans. This gas traps heat on the Earth making us warmer.

deforestation - The removal of trees from a forest.

emergent layer - The top of the rainforest, where the tallest trees reach.

photosynthesis - a process where plants take light, water and carbon dioxide and change it into food that they need and oxygen.

tropical - An area around the middle of the world where it is warm all year round.

rainforest - A forest found in a **tropical** area that has lots of rain.



Brazil and the Rainforest



Year 3 (Autumn Term)



Where are the world's rainforests?

Dear Parents,

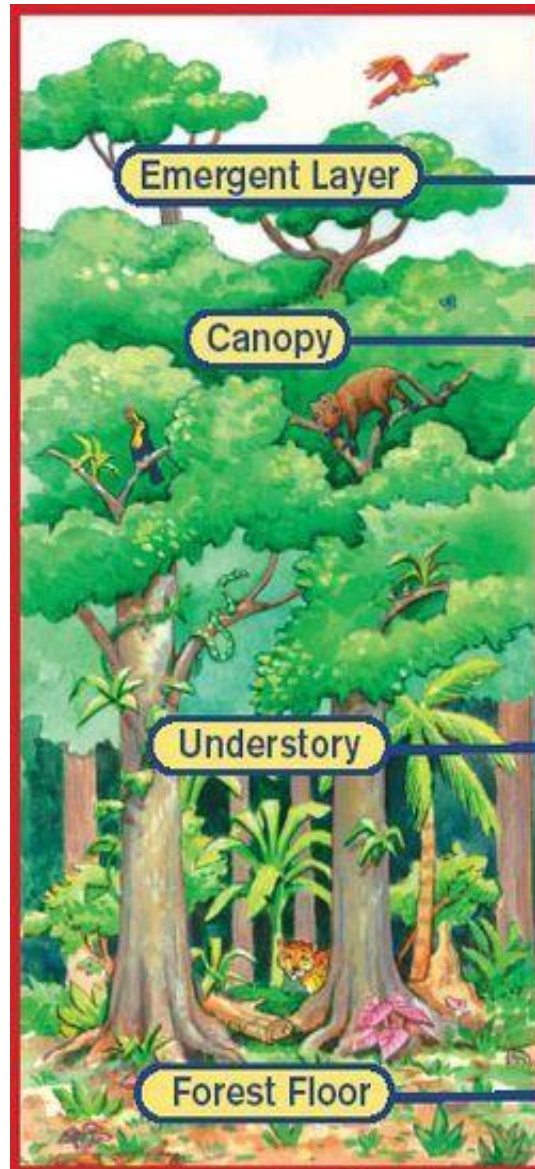
Our next topic is *Brazil and the Rainforest*. Please help your children to prepare for this topic by helping them to learn the key words (**in purple**) and the facts on this sheet.

There are some homework activities on the back of this sheet. Your child can complete these at any time. Your child's teacher would love to see what they have created.

Thank you for your support.
Kind regards - Mr Bhatti

Fact
The world's largest rainforest is the Amazon Rainforest in South America.

Fact
Temperatures in rainforests are high all year round (around 28°C).

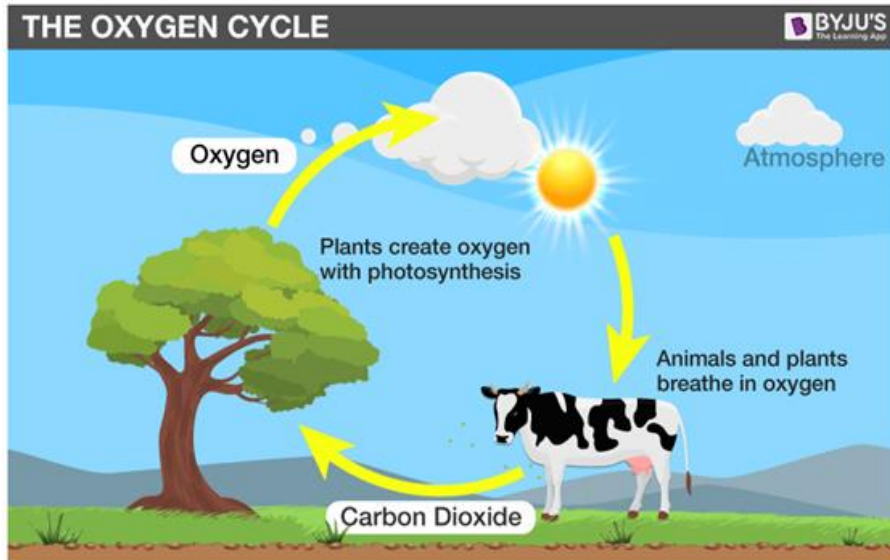


Birds, bats, and butterflies live in the tops of the tallest trees. That is called the **emergent layer**.

In the tops of the shorter trees, or **canopy**, you can find animals such as toucans and monkeys.

Snakes, red-eyed tree frogs, and other animals live in the **understory**, or lower branches.

Animals such as jaguars can be found on the dark **forest floor**.



Fact
Carbon dioxide, in our atmosphere, acts like a blanket around the Earth making it warmer. This is called global warming. Trees help to remove carbon dioxide from the atmosphere.

<u>Interesting facts</u>	
1	Rainforests cover approximately 6% of the Earth's surface by contain more than 1/2 of the world's plants. About 90% of organisms are found in the canopy.
2	About 30 million species of plants and animals live in tropical rainforests.
3	There are two types of rainforests – Tropical and Temperate . Tropical rainforests are generally warmer than temperate ones.
4	Many things we have in our homes come from rainforests including: chocolate, sugar, rubber, bamboo and many medicines.

BRAZIL



Brazil is the 5th largest country in the world by land area and population.

It is called **Brasil** in Portuguese; it is the only country in South America that speaks Portuguese.



The territory now called Brazil was claimed for the Portuguese Empire on April 22, 1500, by Pedro Alvares Cabral. **Independence was confirmed in 1822.**



The capital of Brazil is **Brasilia** and the largest city is **Sao Paulo.**



'**Christ the Redeemer**' is a statue of Jesus Christ in Rio de Janeiro. It is among the Seven Wonders of the World.

The motto of Brazil is "**Ordem e Progresso**" which means **Order and Progress** in English.

The word "Brazil" comes from **Brazil wood**, a tree that grew abundantly along the **Brazilian coast.**



Animals of Brazil include **armadillo, tapirs, jaguars, pumas, caiman crocodile, the spotted ocelot,** and many other exotic reptiles and insects.



Brazil covers **three** time zones.

75% of Brazil's people live in the cities.



60% of the Amazon Rainforest is located in Brazil.



Brazil is the largest producer of **coffee** in the world.



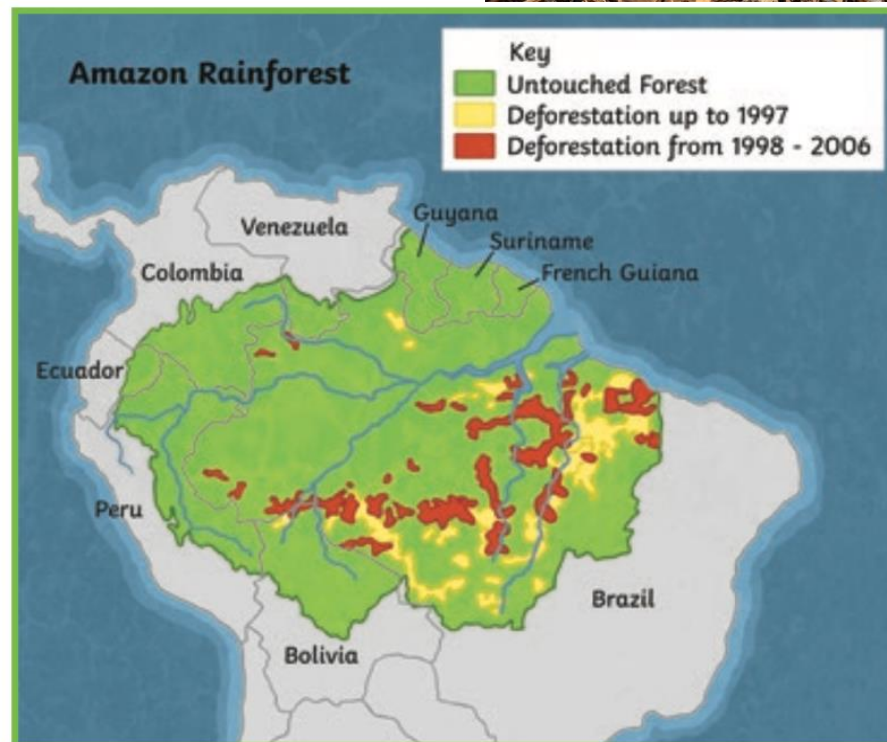
In Brazil, the **Iguazu Falls** consisting of **275** falls is the largest group of waterfalls in the world.



Copyright © 2015 Mocomi & Anibrain Digital Technologies Pvt. Ltd. All Rights Reserved.

<u>Causes of Deforestation</u>	
1	To clear space for farming: growing crops (e.g. soya beans & palm oil) and space cattle to generate cheap beef.
2	Chopping down trees for wood.
3	To build roads to mine for metals, gold & diamonds.
4	To dig for oil.
5	To flood areas to make dams & generate electricity.

<u>Impact of Deforestation</u>	
1	An area the size of 20 football pitches is destroyed every 60 seconds.
2	½ of the tropical rainforests we had are gone.
3	28,000 species of animals are expected to become extinct in the next 25 years.
4	Local people's homes are destroyed.
5	Levels of carbon dioxide in the air are increasing and oxygen is decreasing.

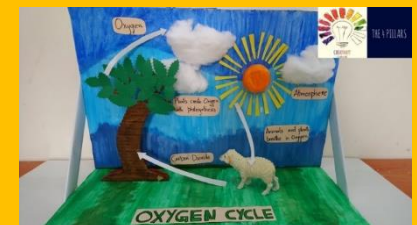


Fact
Brazil was the first South American country to host the Summer Olympic Games (in Rio de Janeiro) in 2016.

Fact
Football is very popular in Brazil. Brazil have won the World Cup a record breaking 5 times.

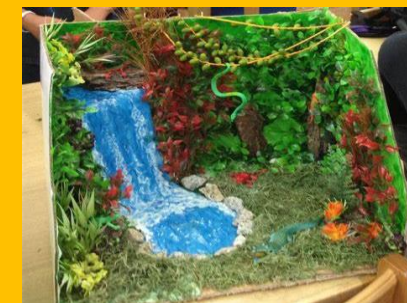
Homework Ideas

(1) Make your own oxygen cycle model.



(2) Draw a map of South America and label on it Brazil and the other countries in South America. Do not forget to label the major rivers and mountains to.

(3) Create a rainforest diorama for a box.



(4) Draw or make a model of some of the animals that you would find in the Amazon Rainforest. What facts can you find out about them?



(5) Create a model or a sketch of the Christ the Redeemer statue.

(6) Look at the research sheet about Brazil on the left of this page. Use the internet and information on her to create your own research project. Remember to include pictures and writing in this.

(7) Pele is one of Brazil's most famous footballers. What can you find out about him?

REMEMBER TO BRING INTO SCHOOL ANY HOMEWORK THAT YOU COMPLETE TO SHOW YOUR TEACHERS.

